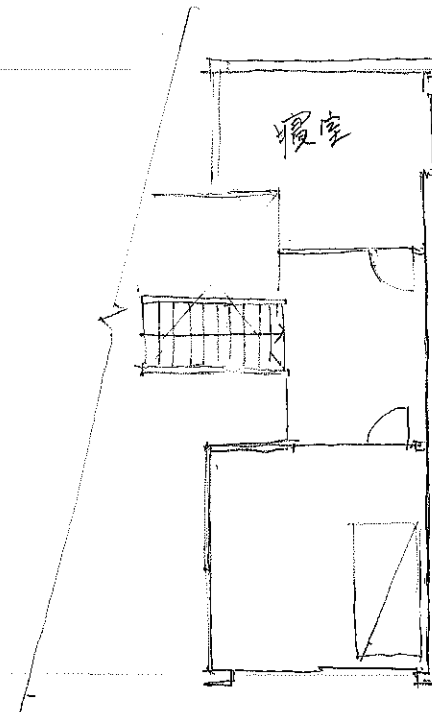
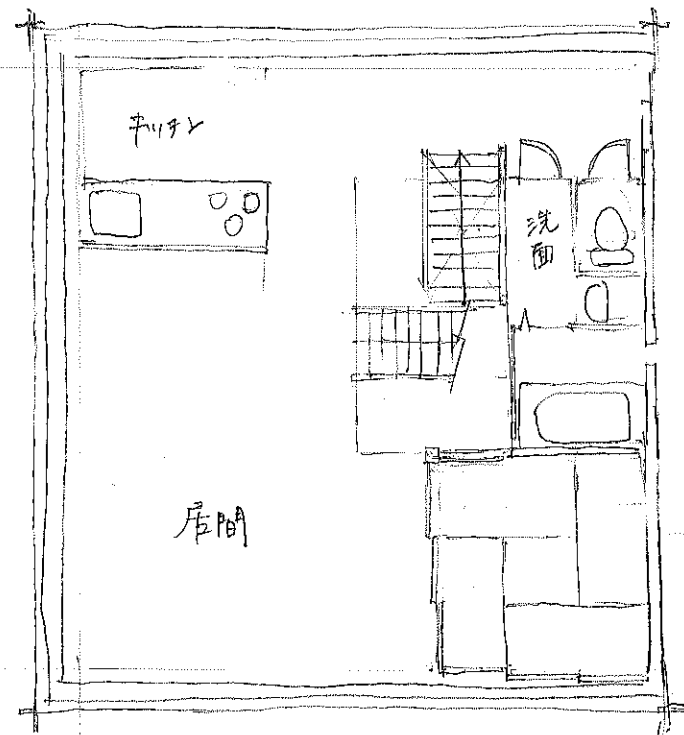
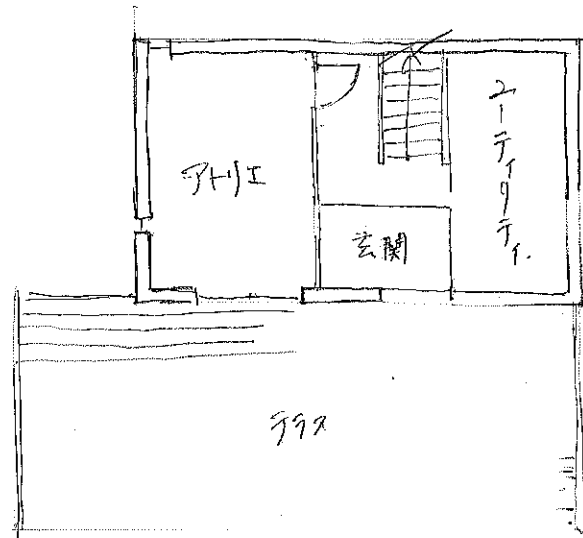
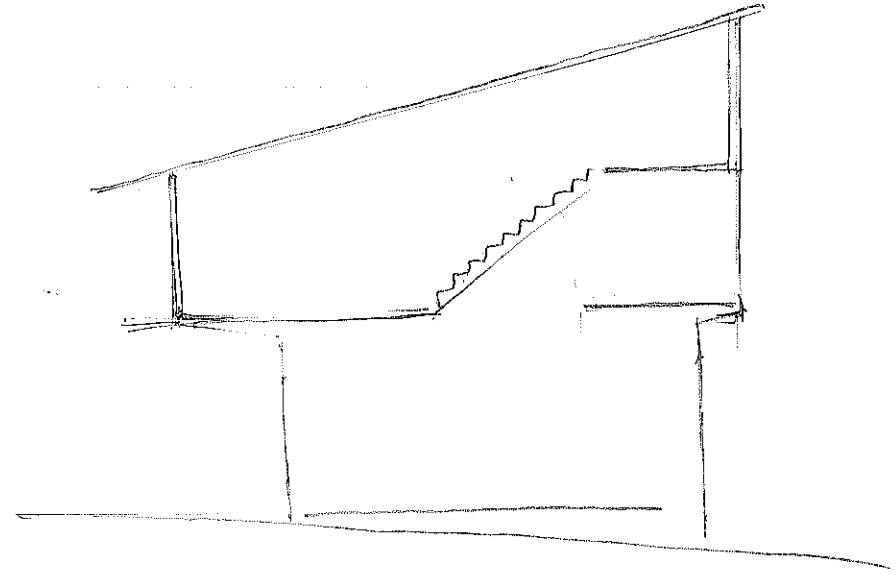


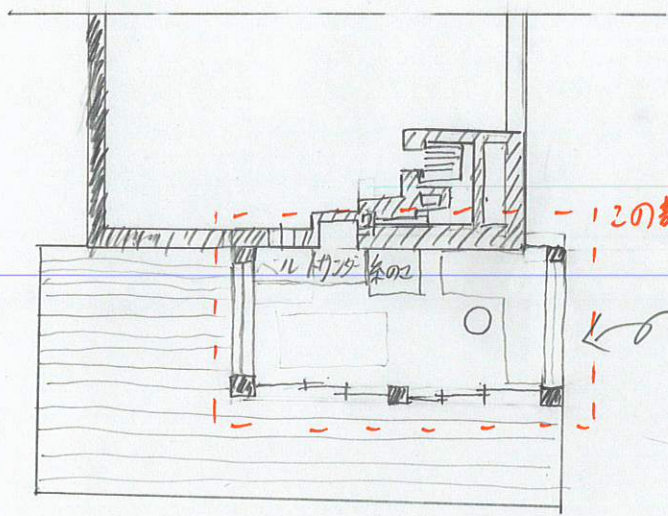
4/12 中島 悠



森のめぐみを受けろ

4121096 丸尾隆仁

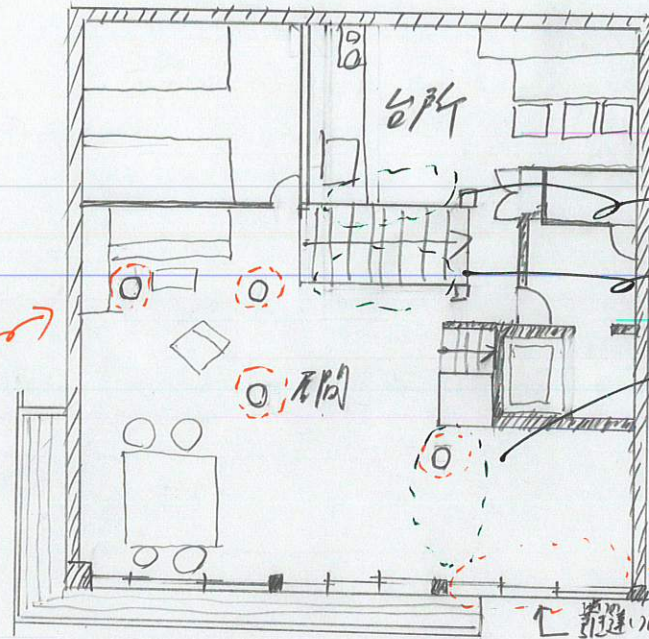
DIY空間  
大人3人の女子好きな事  
増設空間  
DIY空間  
大人3人の女子好きな事  
増設空間



1F 1/100

この部分を追加  
DIY

木材の柱を  
追加  
木材の柱



2F 1/100

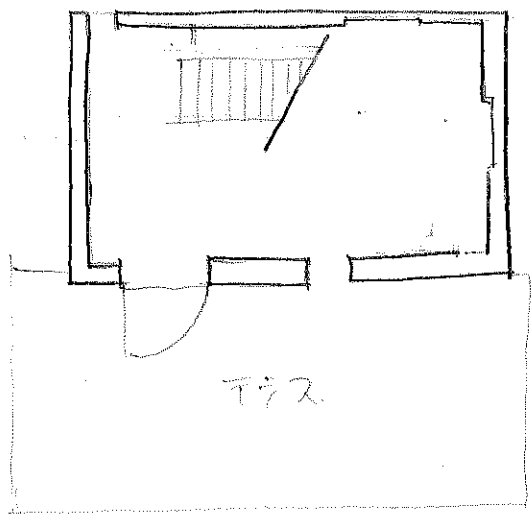
壁色はさう

※特に触れていない  
壁の開口部は既存と同じ

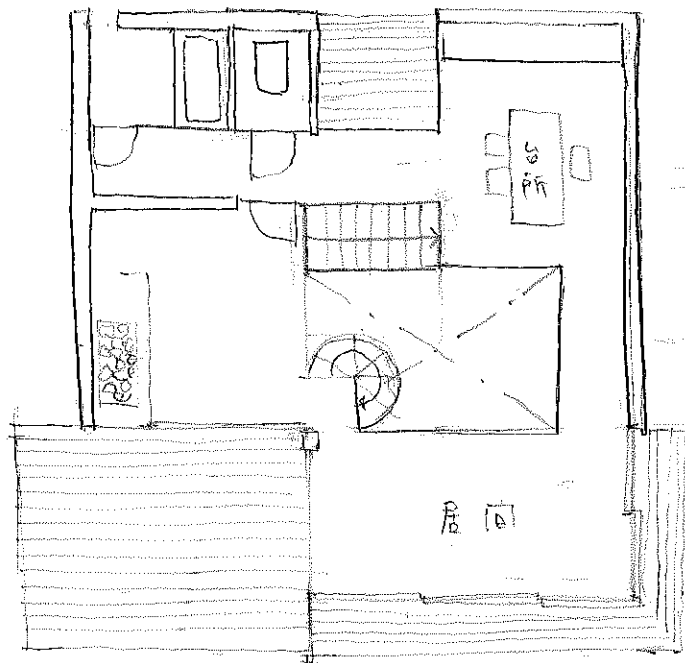
窓に変更

- 大人3人の女子好きな事は1人目は木材を使ったDIYをすること  
2人目は料理と食事をすること  
3人目は読書をする  
ことである。
- 1階部にDIYスペースを追加
  - 2階の台所から居間まで見渡せるように
  - 眺望を長くするため南側の壁を窓ガラスに変更

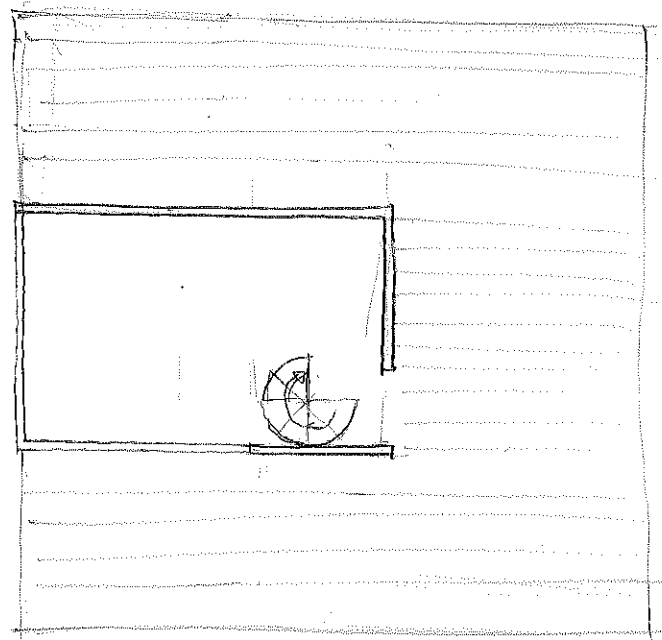
この人たちは周辺の環境から森のめぐみを受けろ。



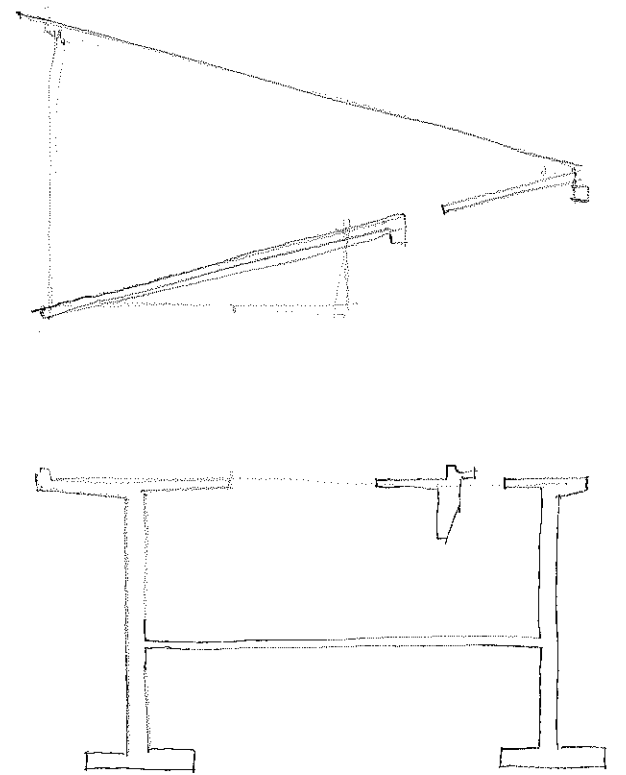
1F



2F



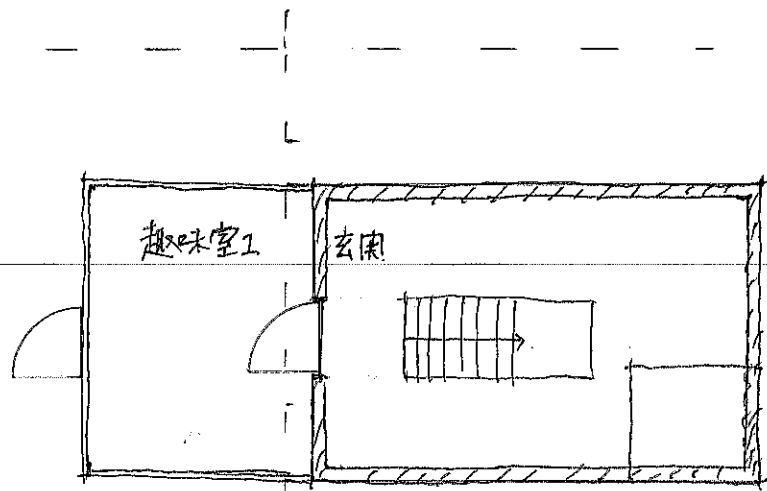
3F



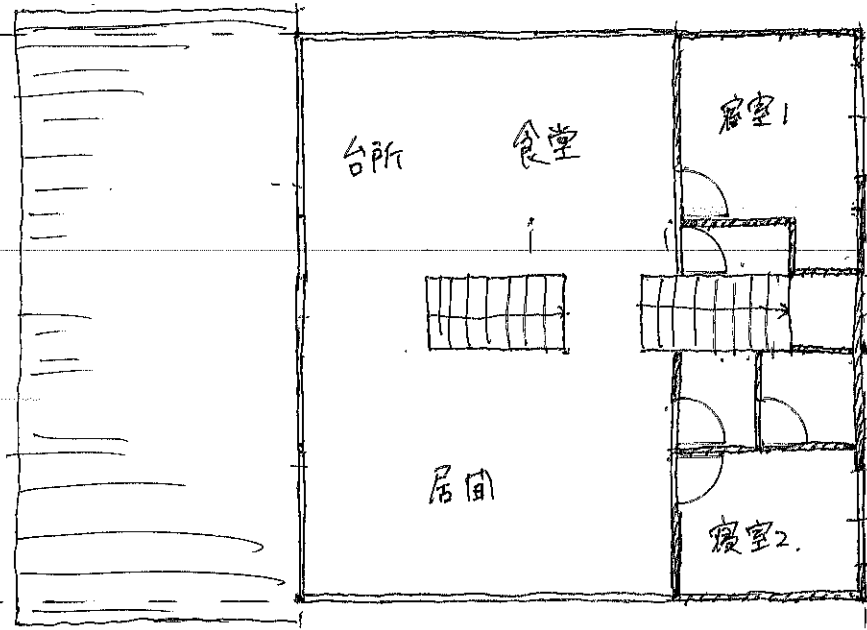
断面

1/100

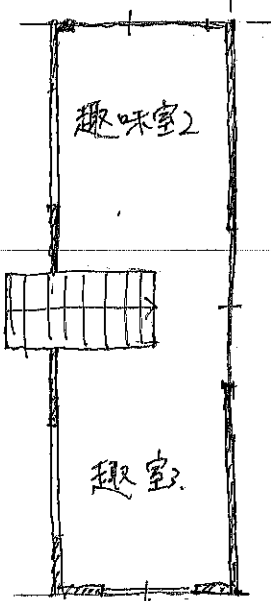




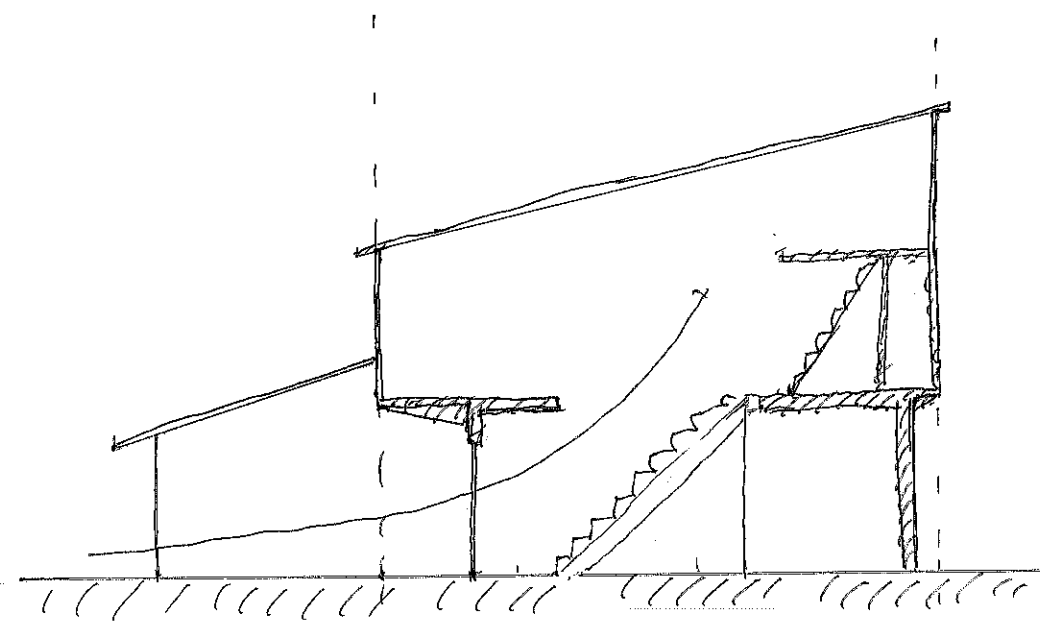
1F 平面図 1/100



2F 平面図 1/100



3F 平面図 1/100



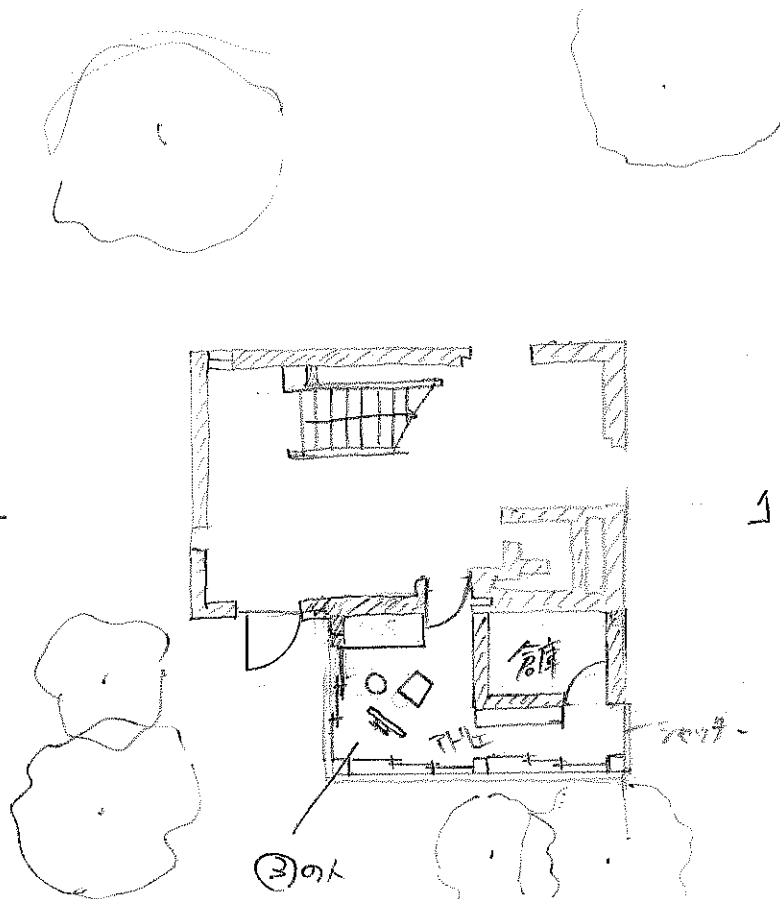
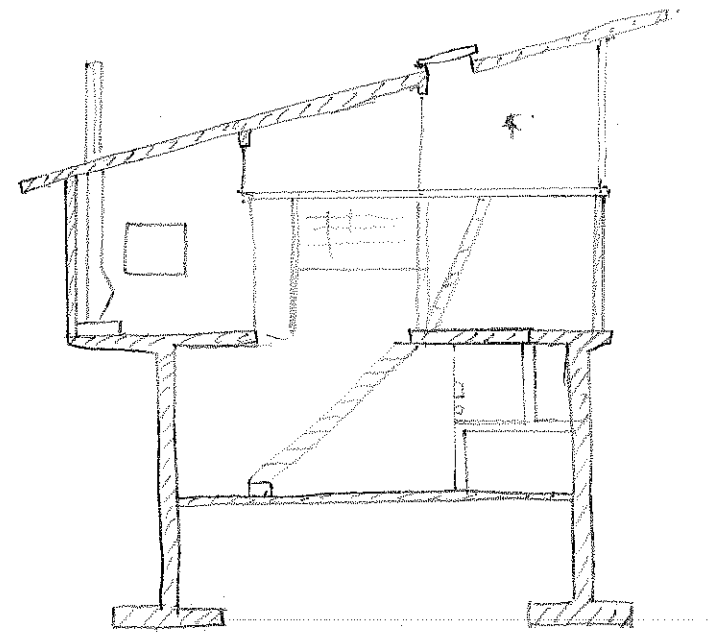
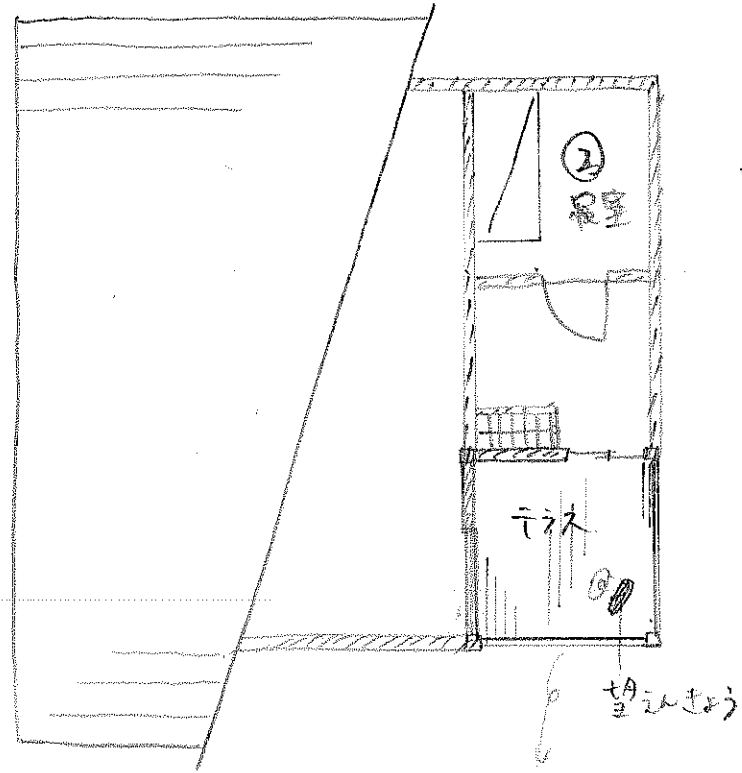
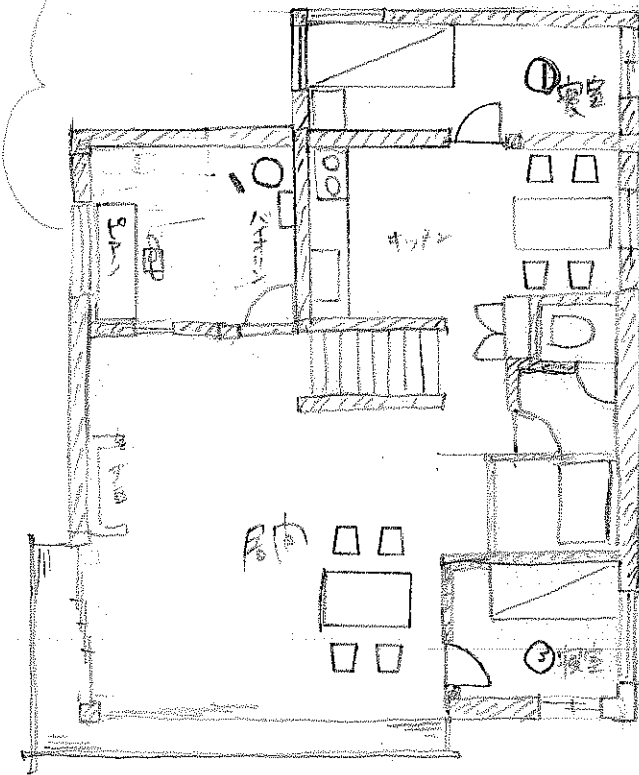
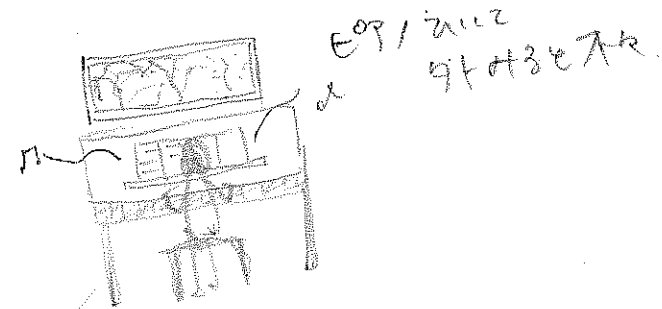
断面図 1/100

中村

大人3人

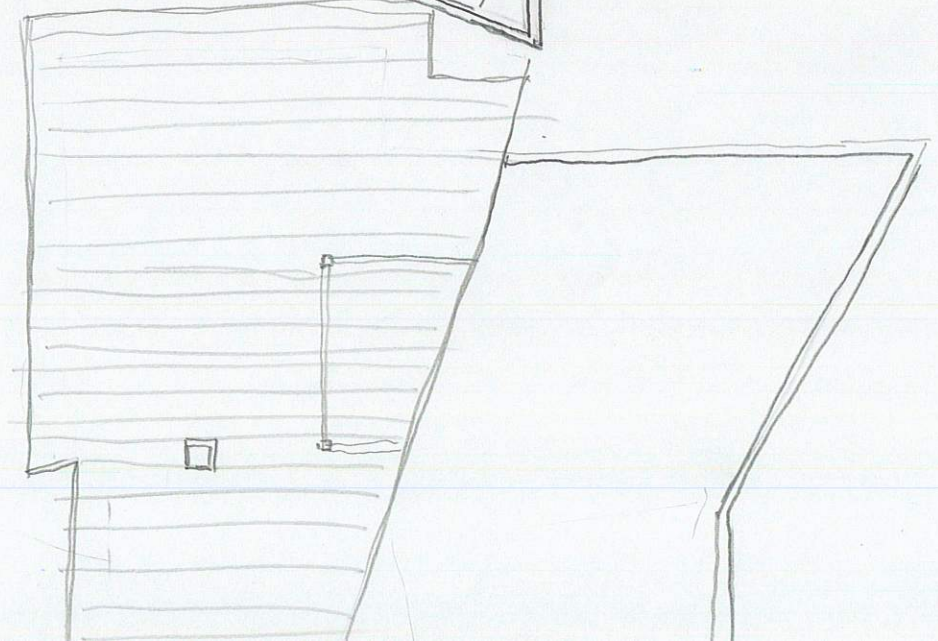
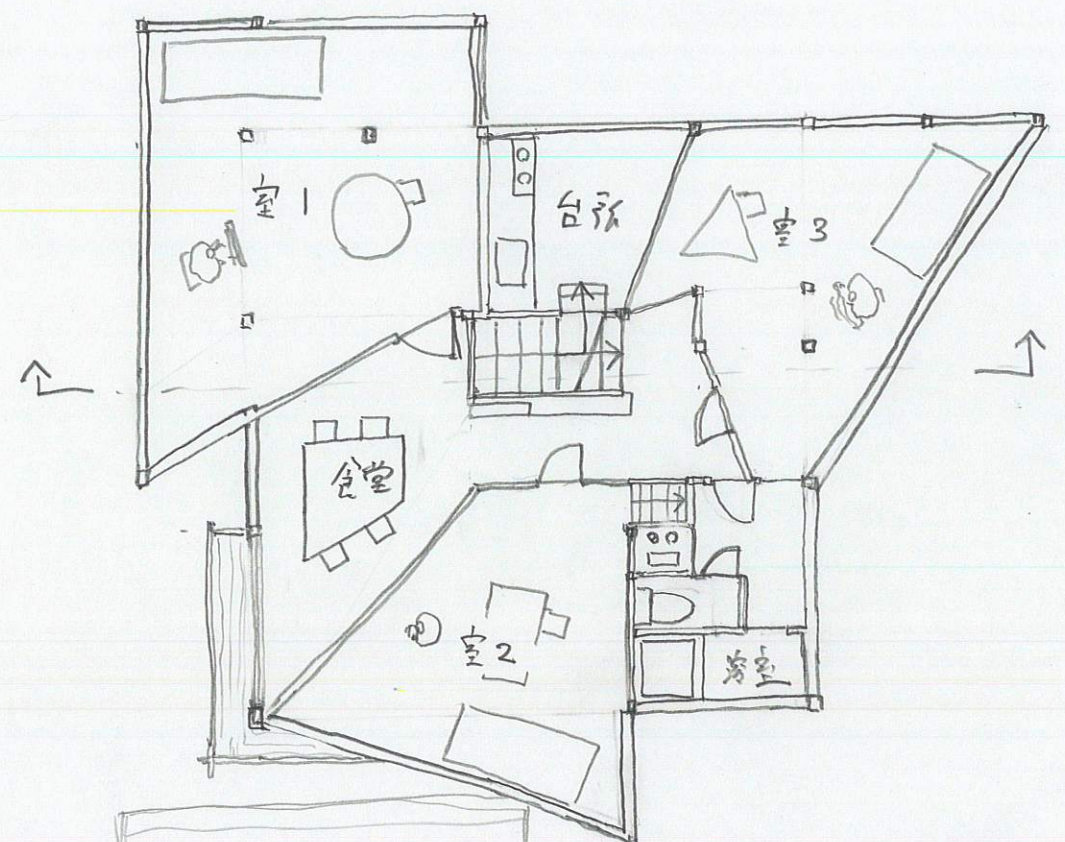
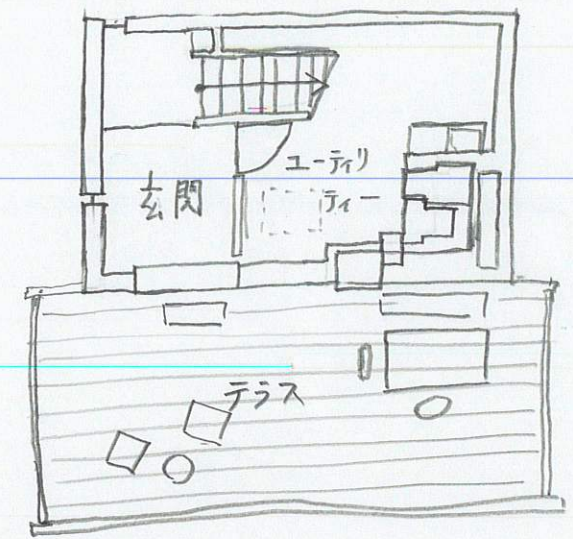
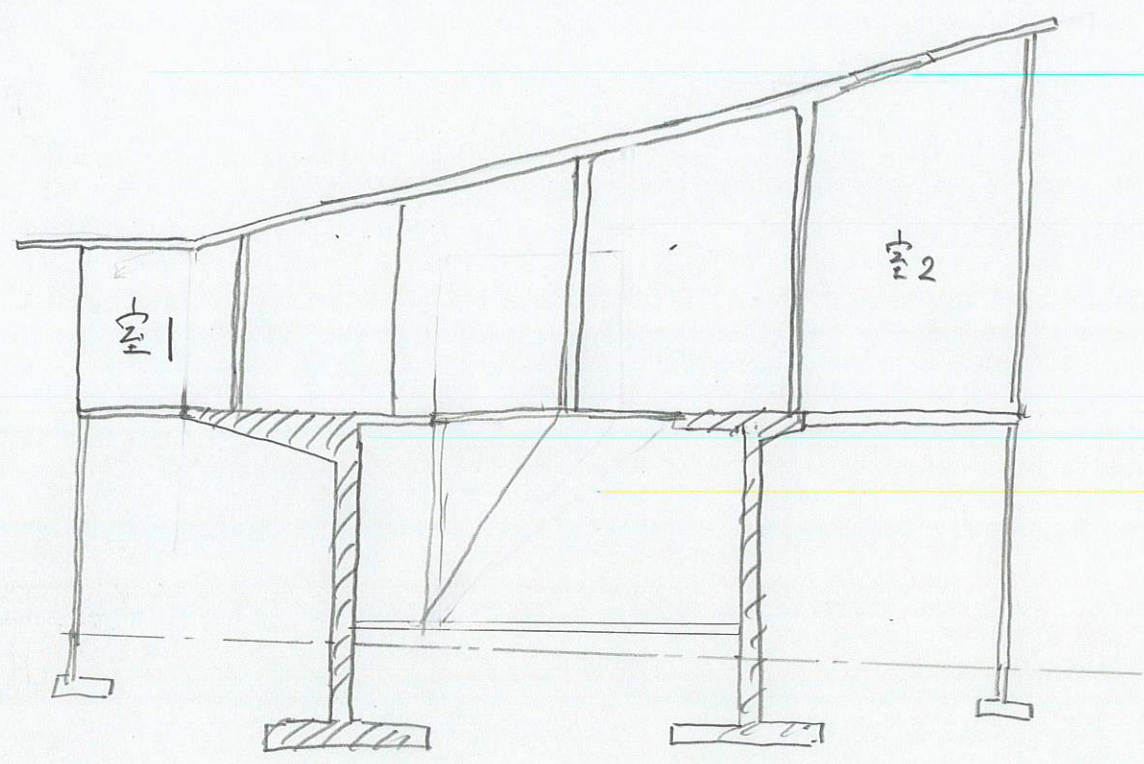
仕様




- ① バイオリ=ピアノ
- ② バードウォッチング
- ③ 風景画

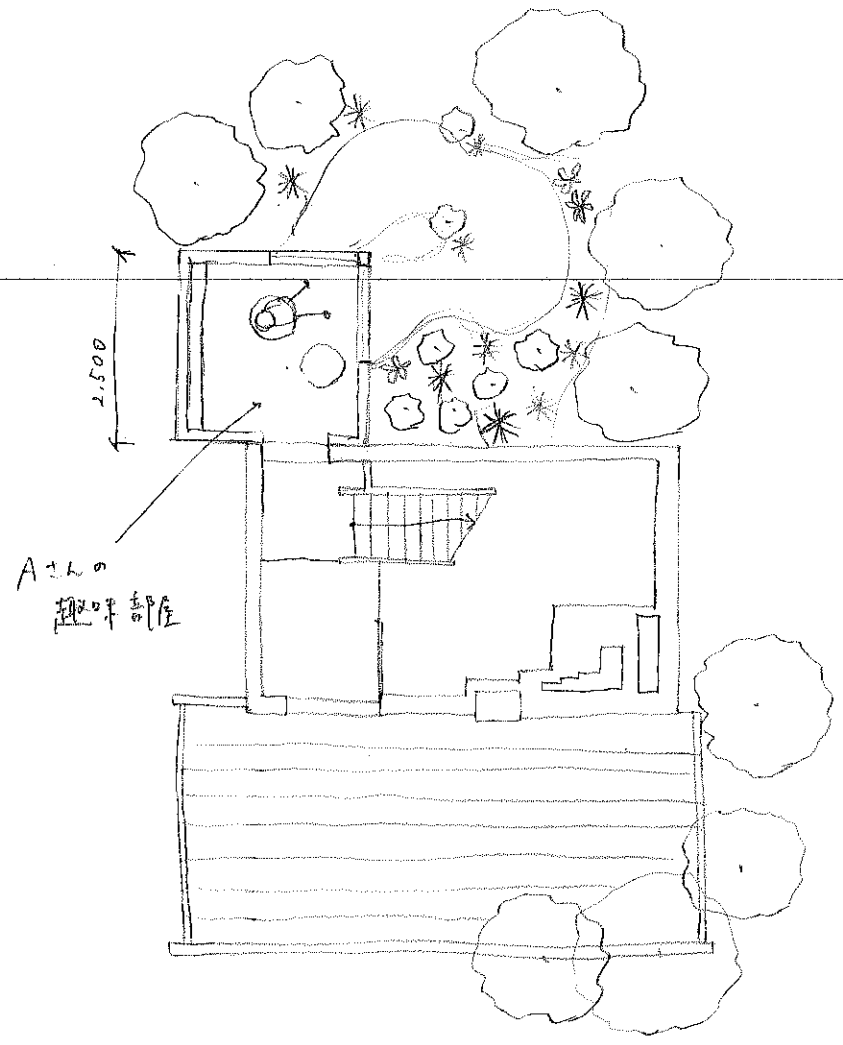


② 7/2人の部屋  
7/12/2022/9/14/2022

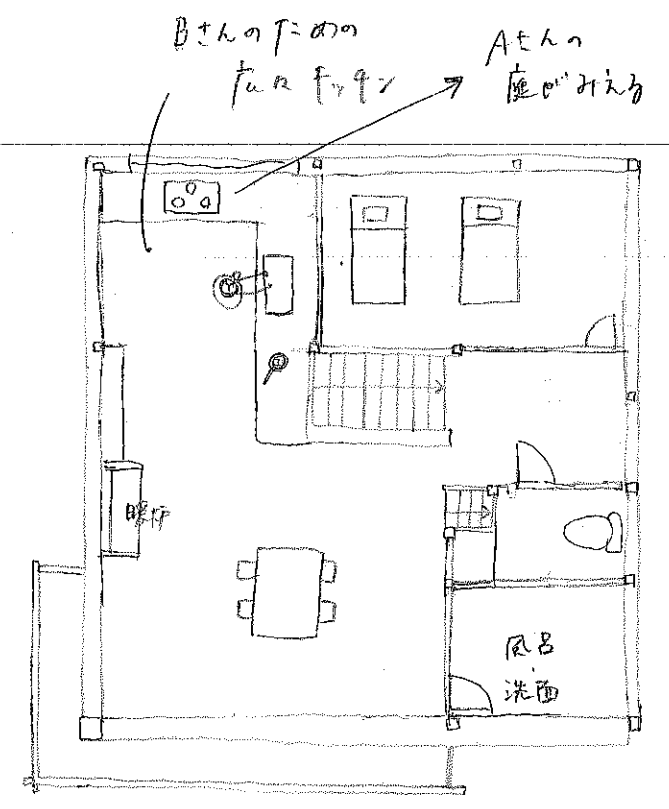
# 寄生する家



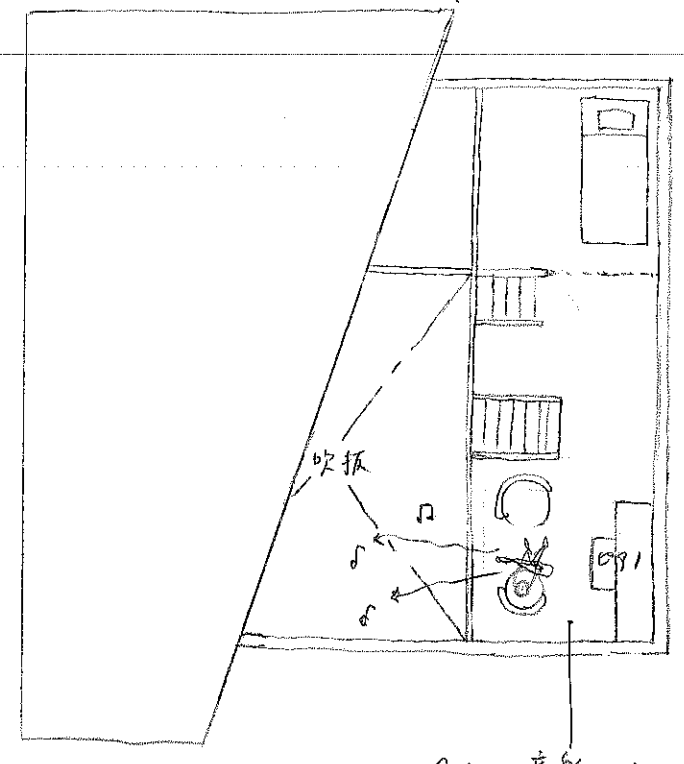
- 設備 天 
- 音響家 
- 早見家 



1F plan



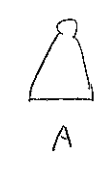
2F plan



3F plan

2Fにエスケ

◎ 住人構成

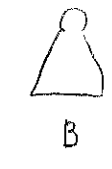


A

庭づくり  
の趣味



1F

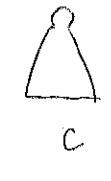


B

料理  
の特技



2F



C

音楽  
の特技  
ギター、ピアノ



3F

1階内設計

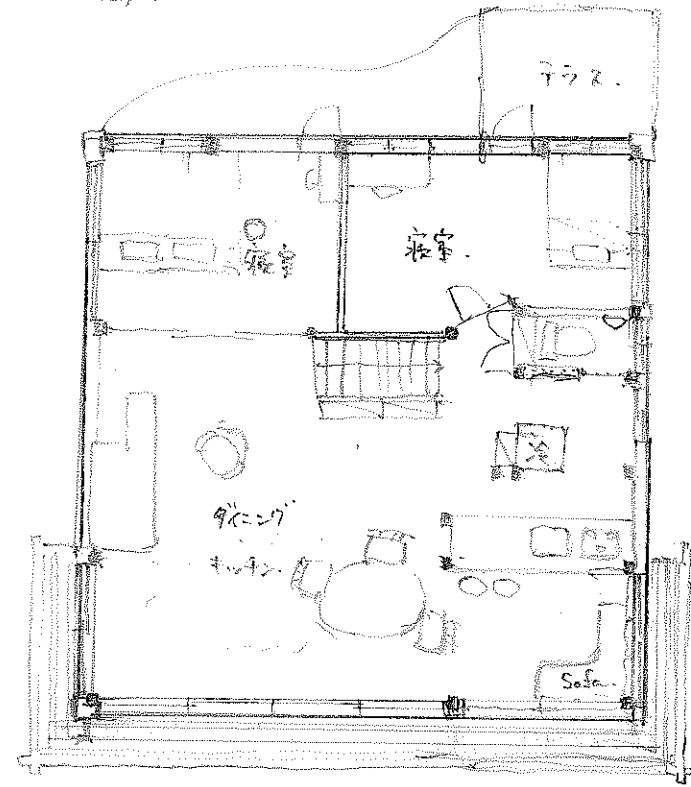
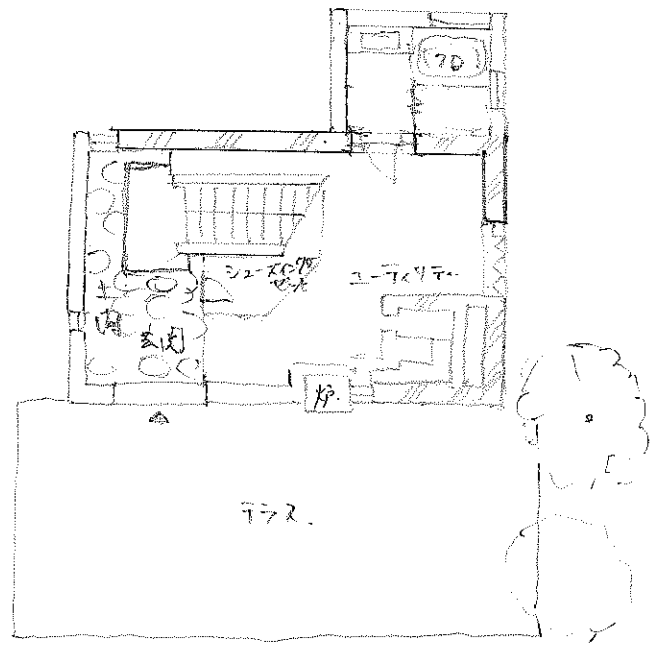
4.12.

早川 侑保子

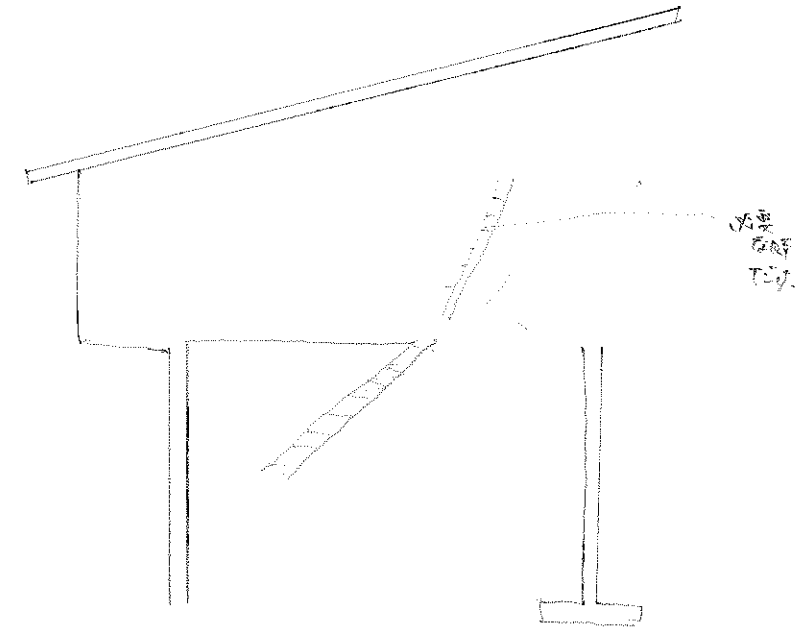
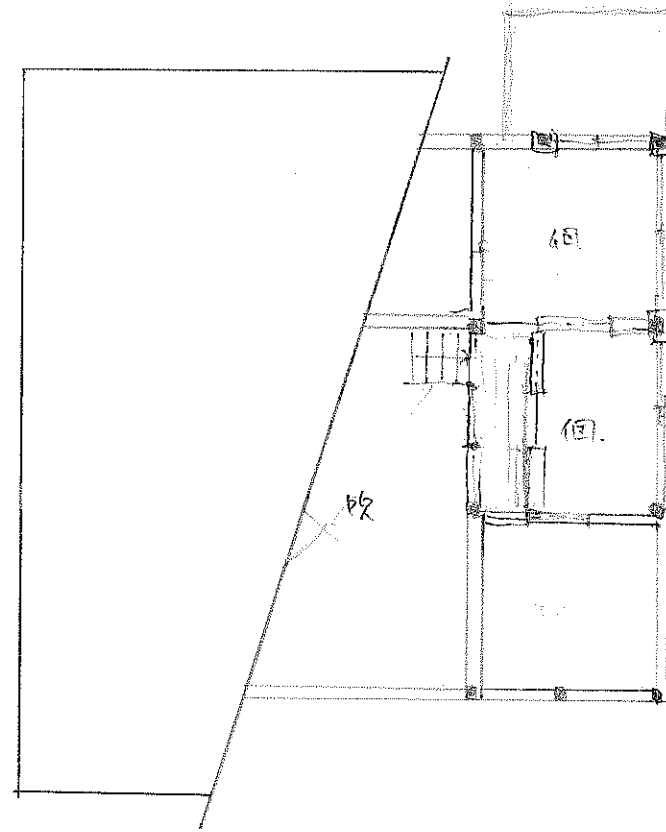
・大人3人

1F

2F



・ 20-5 2(1) x 2.7 = 7.7 x 2.0





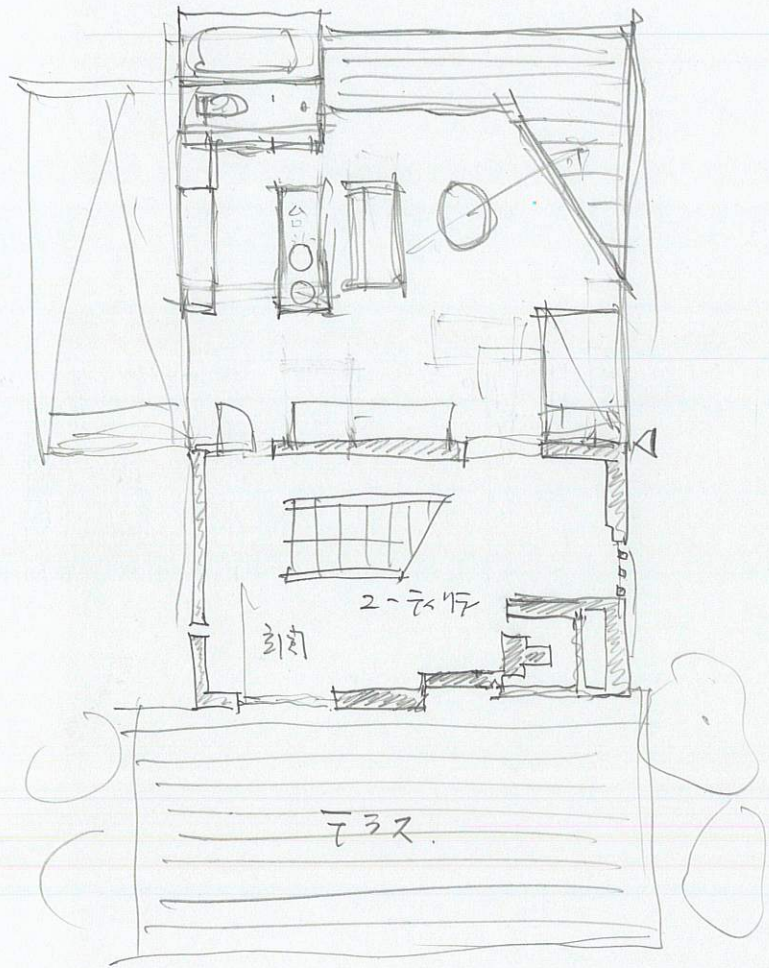
W-4-222 House.

二阶段

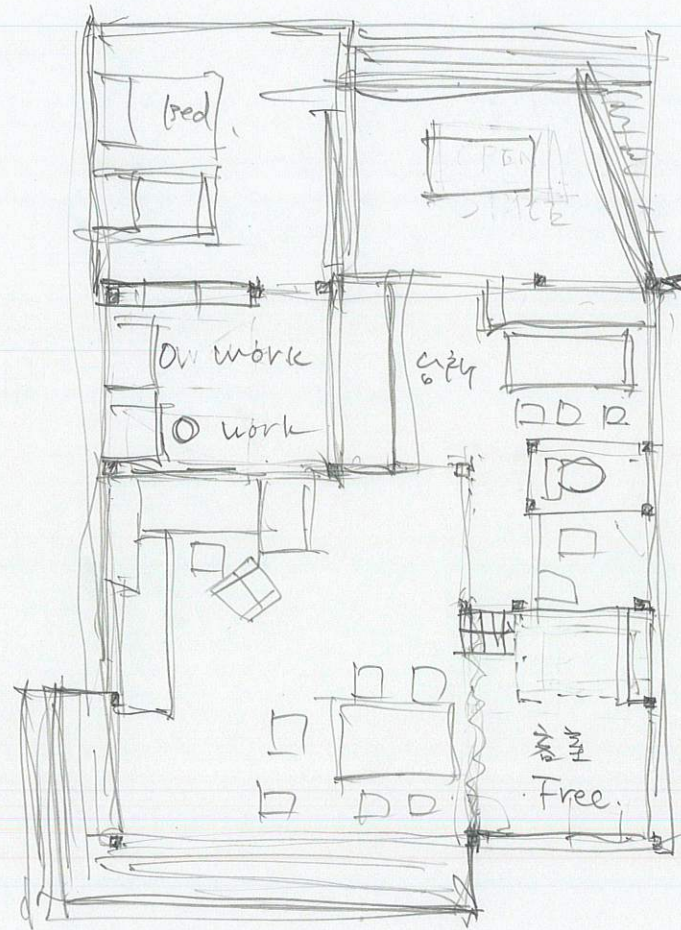
- ① 东面部分墙体 RC 部及木造轴部
- ② 大人3人各人好きな宿舎を建てた
- ③ 大人3人の設定、一人+女? 老夫婦+子供 老人+主婦
- ④ RC部 一部穴開けOK.

二阶段

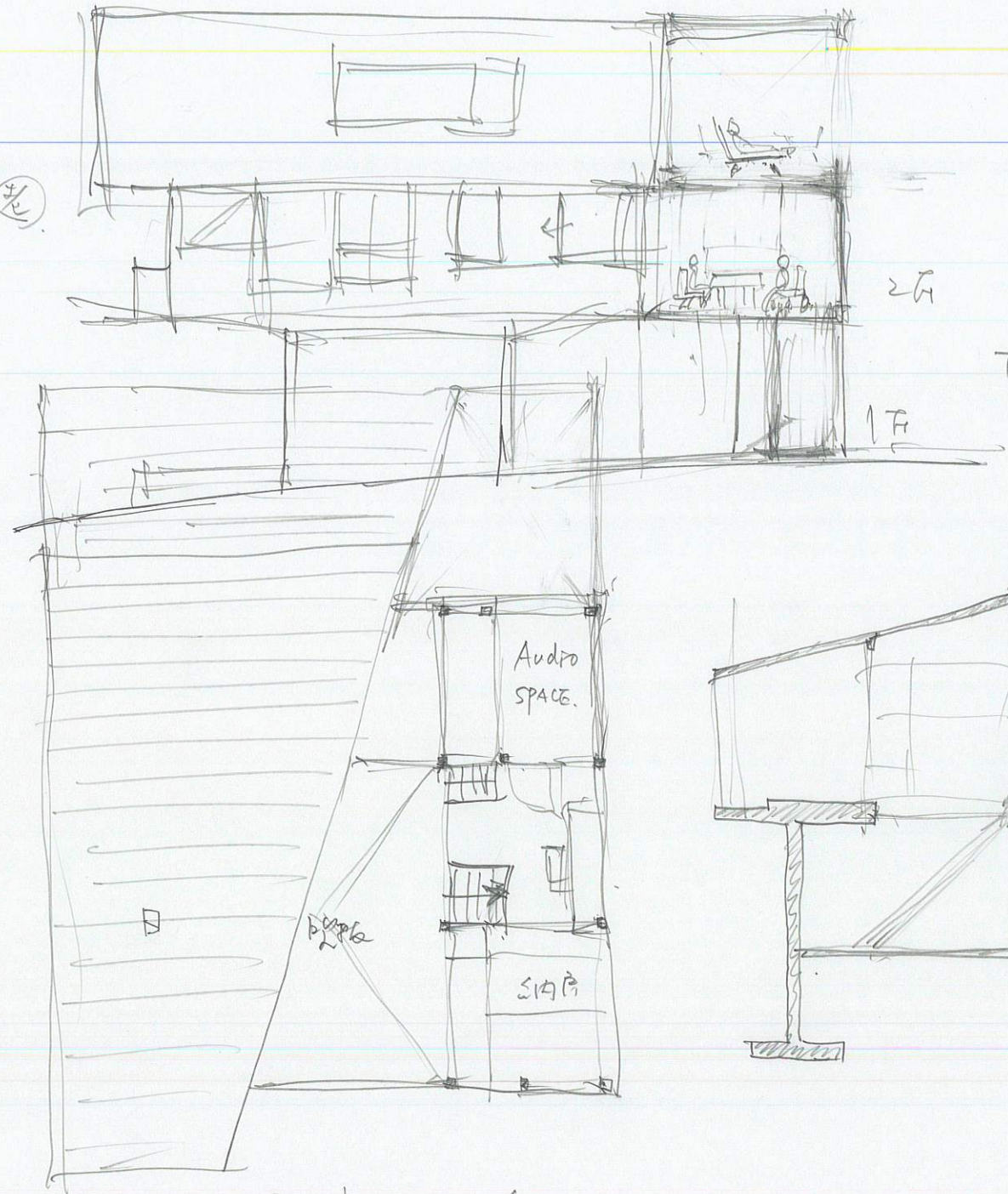
若い夫婦+老



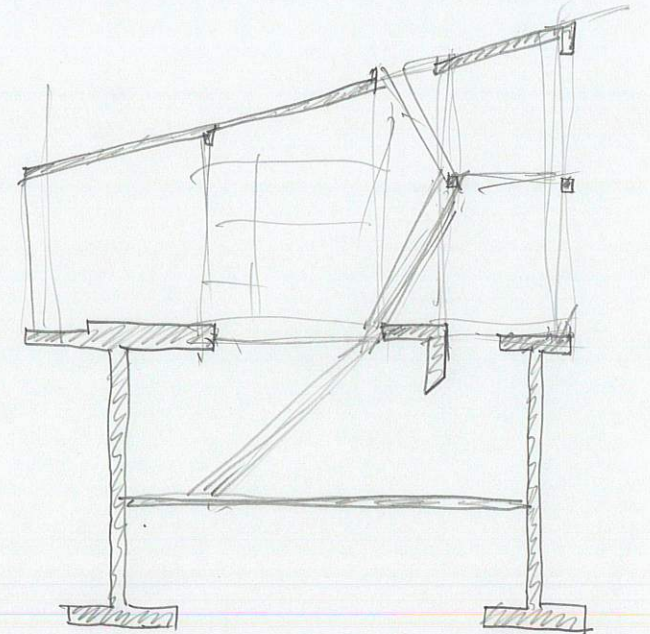
1F平面 1/100



2F平面 1/100



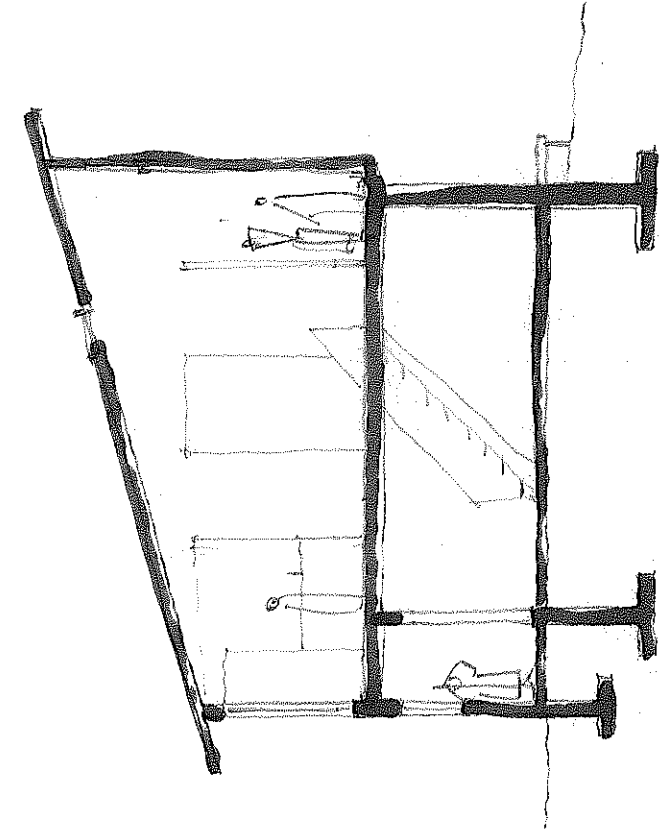
1F平面 1/100



車庫平面 1/100

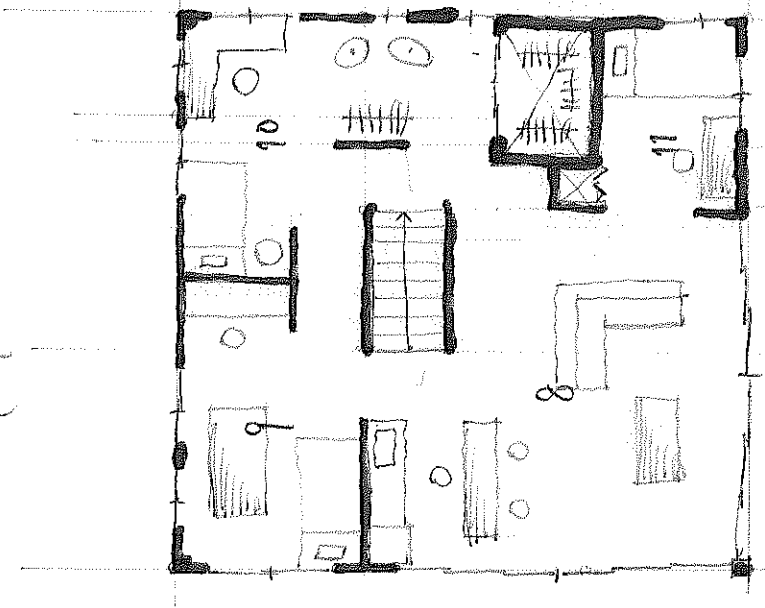
117 27  
280412

2012.12.27  
9  
P. 112.



SECTION

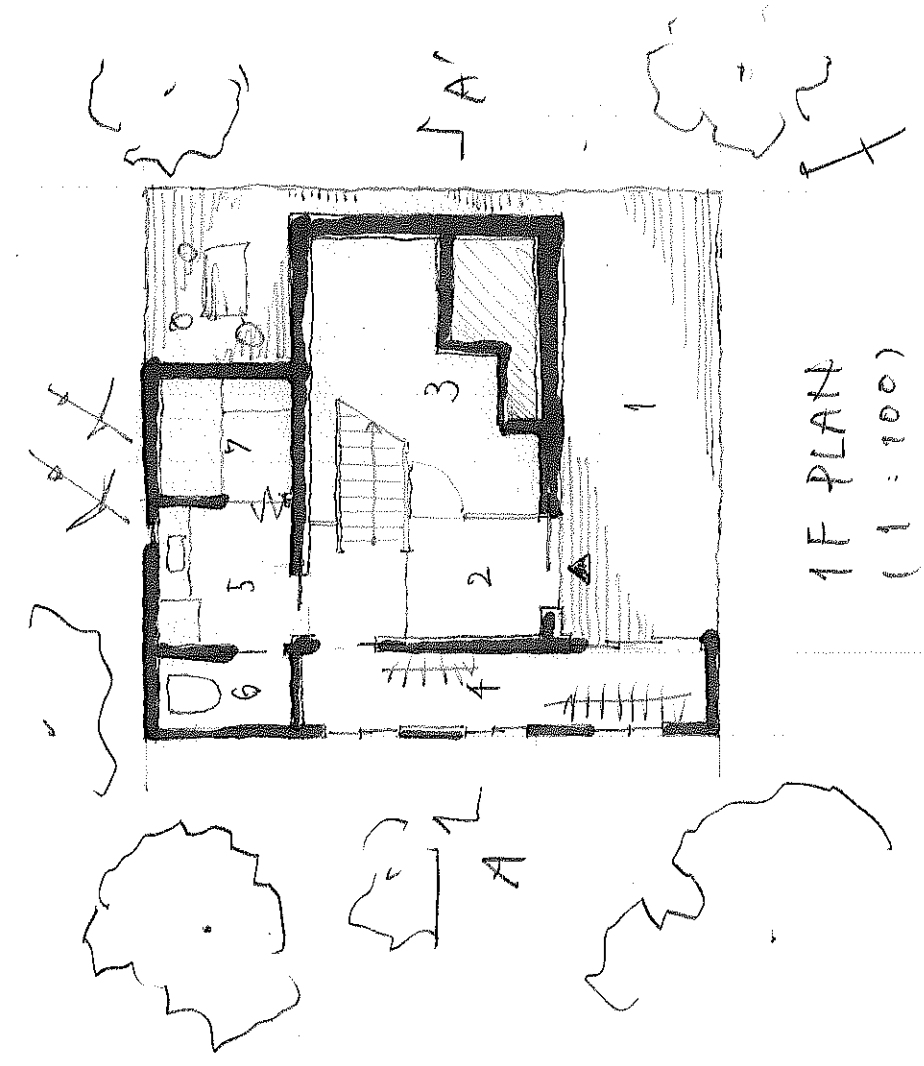
(1:100)



2F PLAN

(1:100)

- 11 小説家の個室.
- 10 7人ソファの個室
- 9 建築家の個室
- 8 居間 台所 食卓.



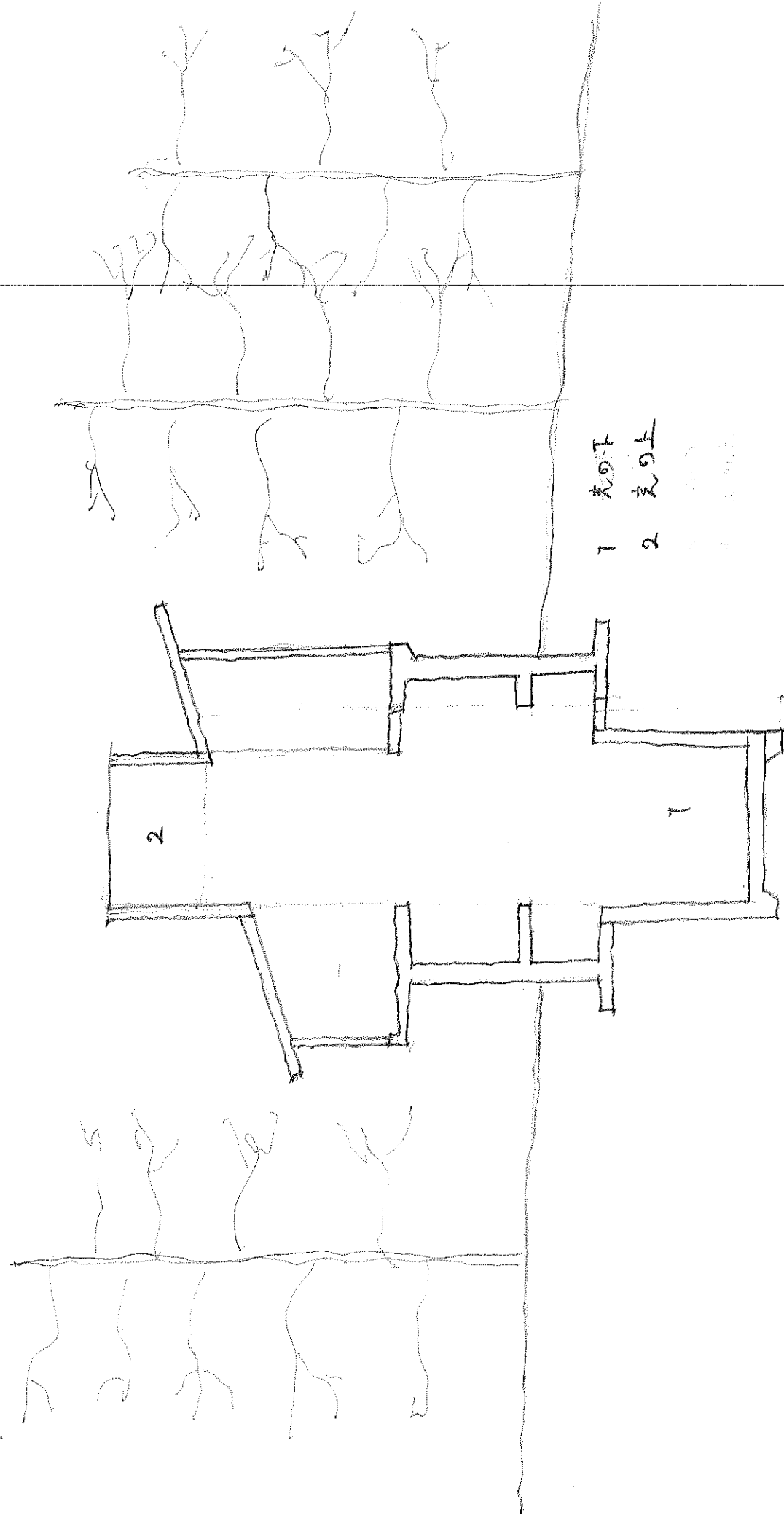
1F PLAN

(1:100)

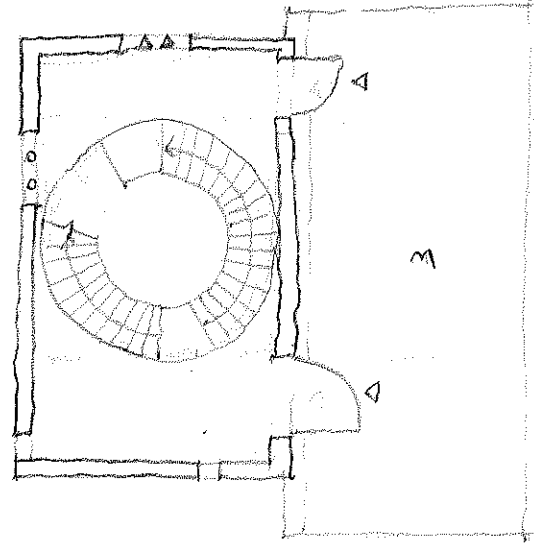
- 7 浴室
- 6 トイレ
- 5 洗面所
- 4 70-cm F
- 3 2-階リフト
- 2 玄関
- 1 階段

光の筒

小川 隆成

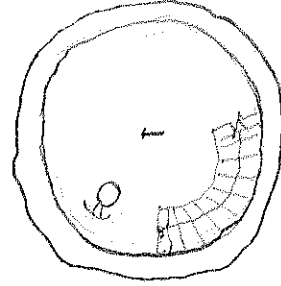
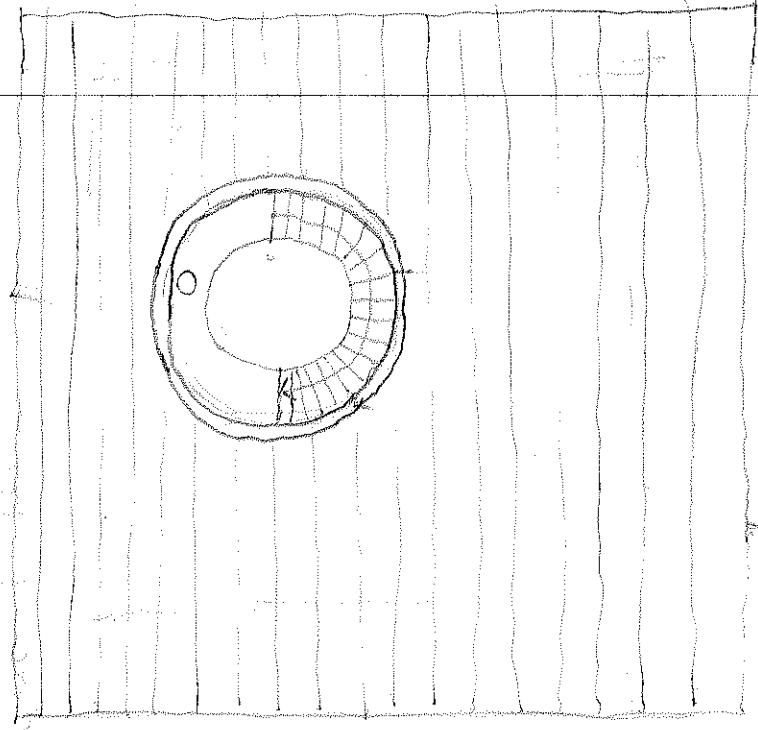


1 光の下  
2 光の上

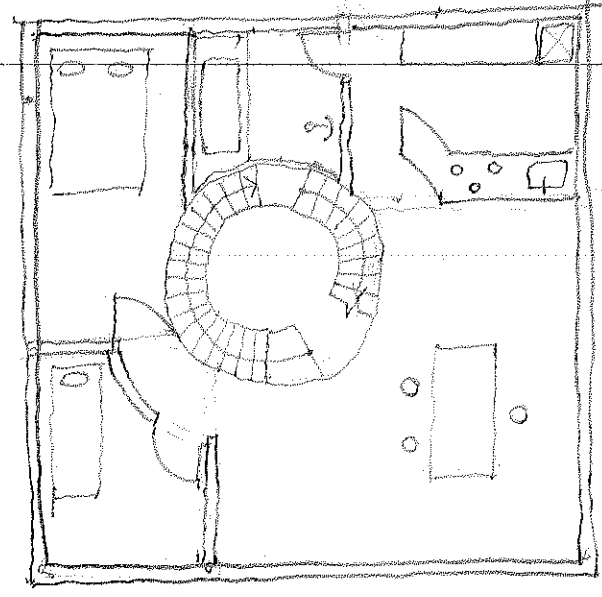


3F/A

1F



BI

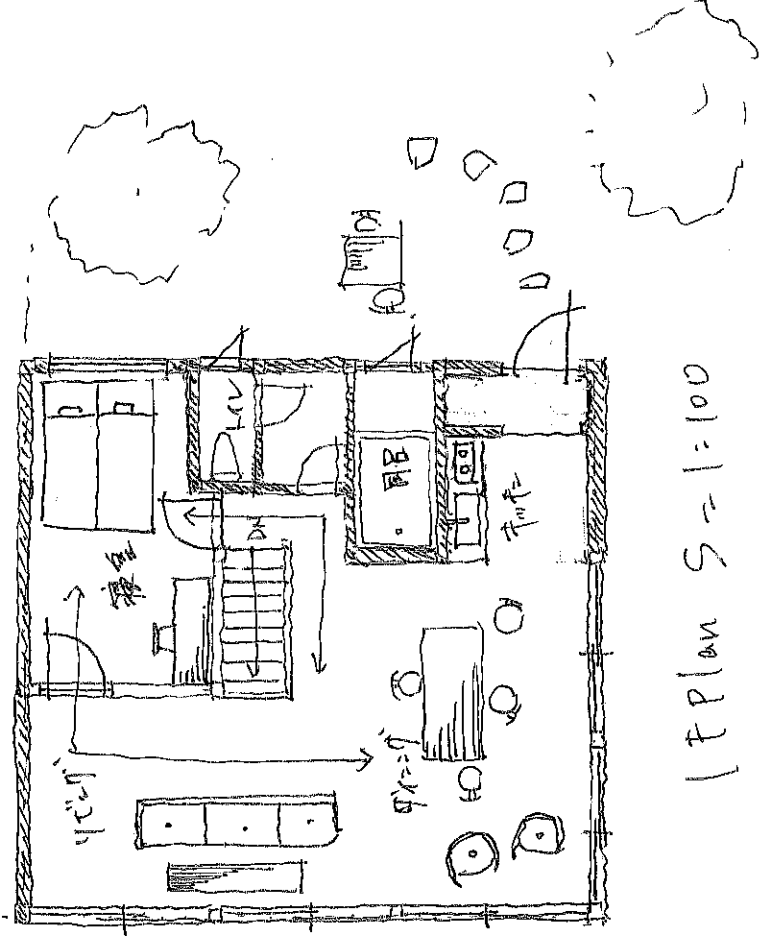


1

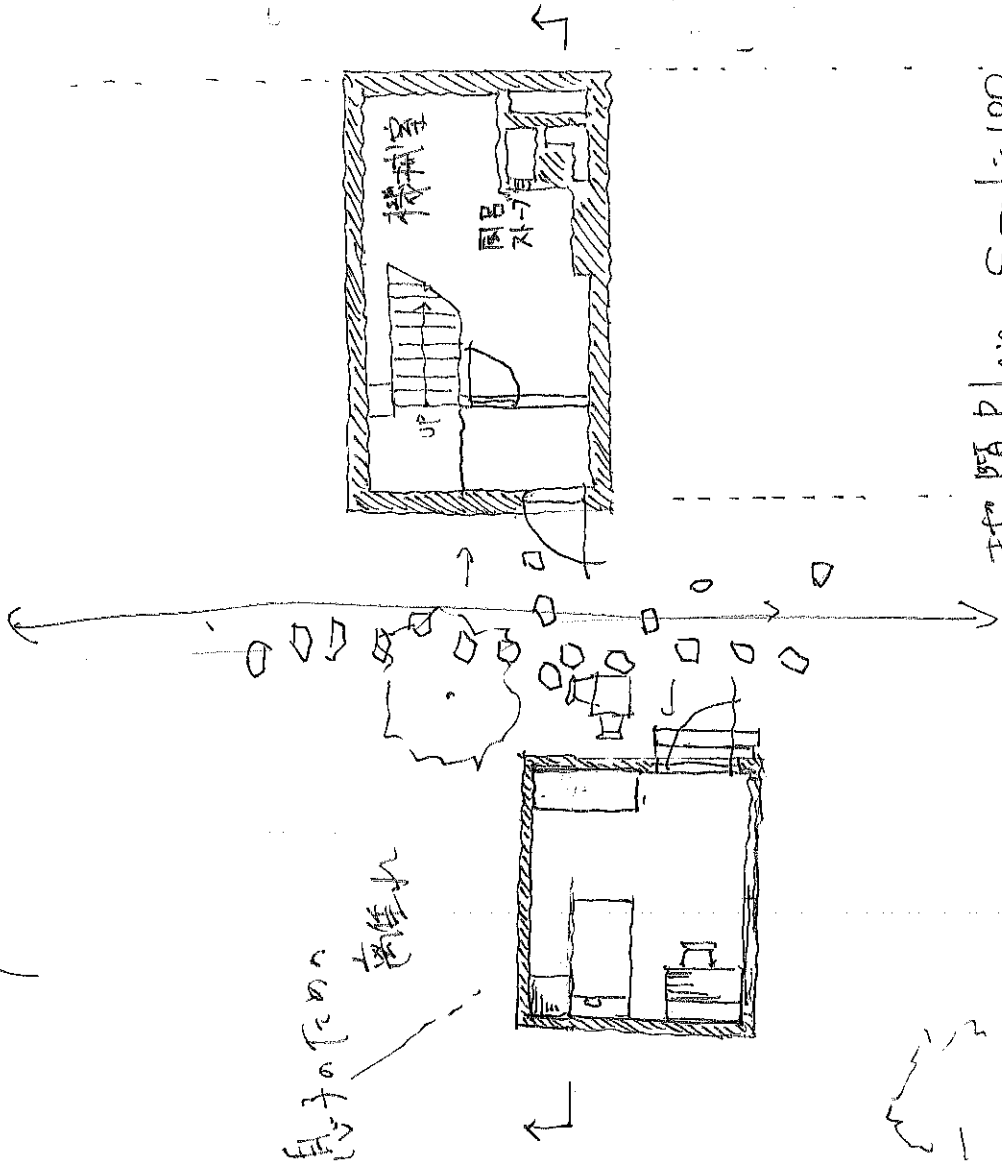
2F

両親を20才に近づけた息子のための別荘

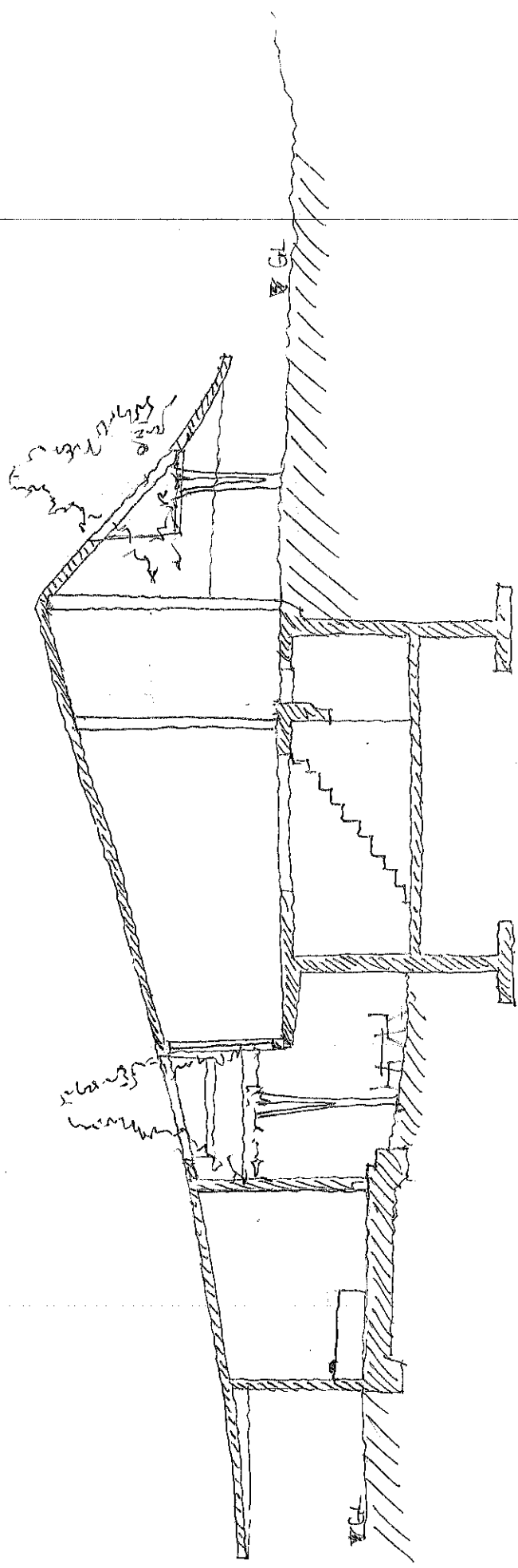
M2 岡野



子

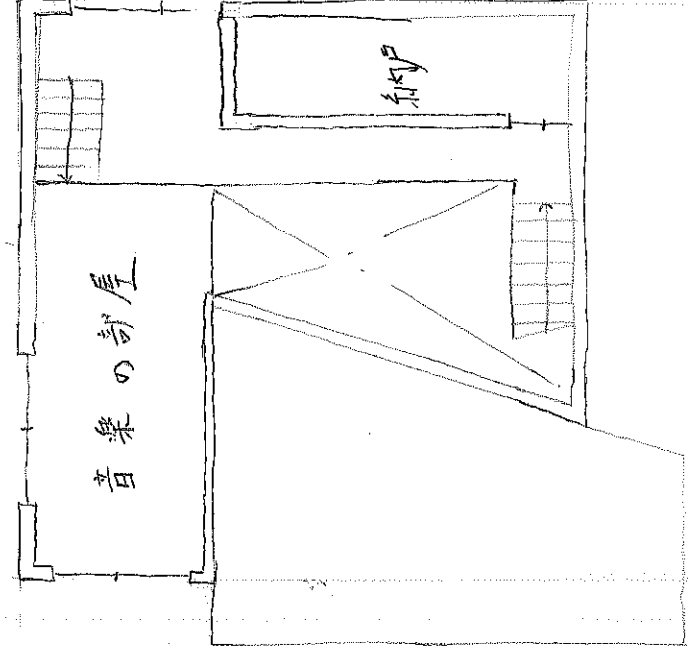


息子のための  
浴室

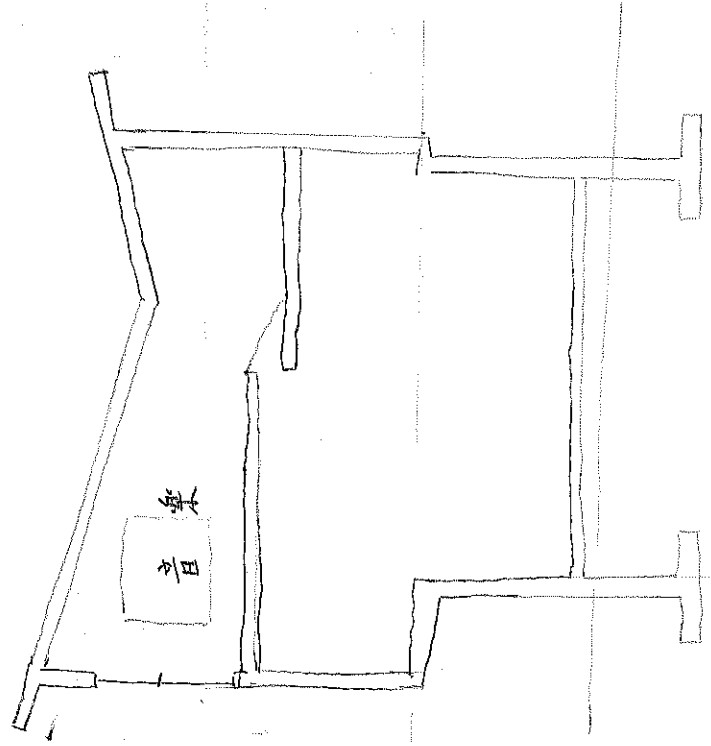


「周りを巡る家」

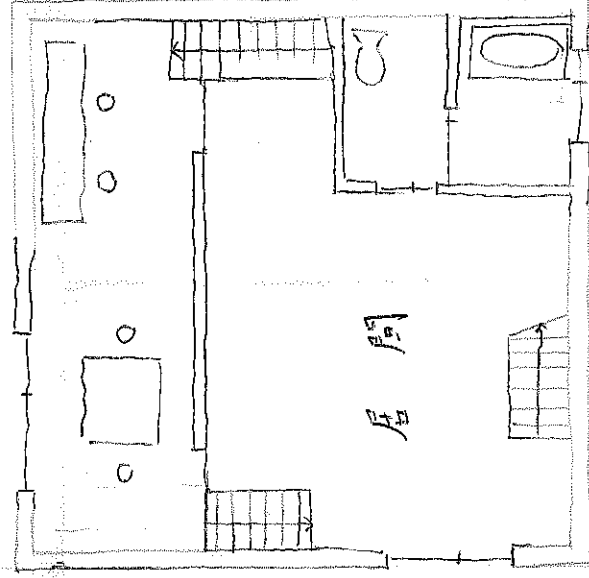
音楽・料理・本と一人で楽しみながら、  
互いの様子も感じよう



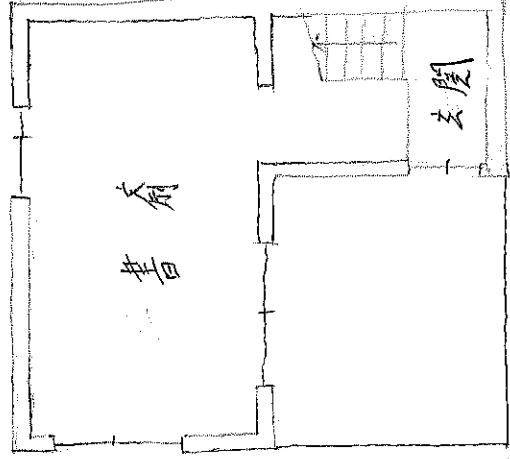
3F



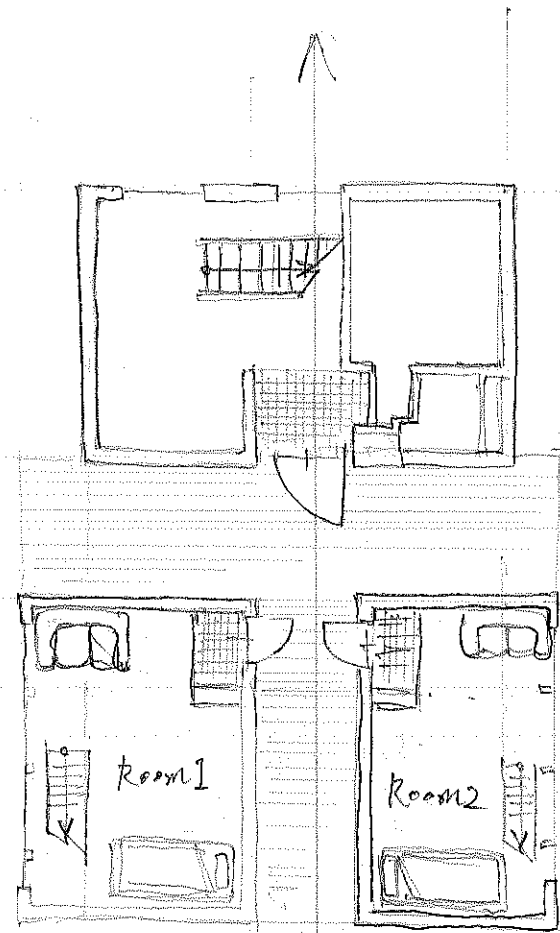
SECT 20A



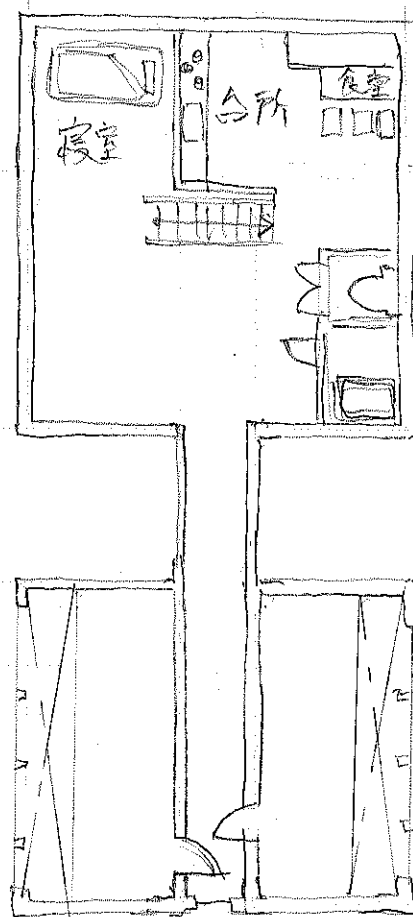
2F



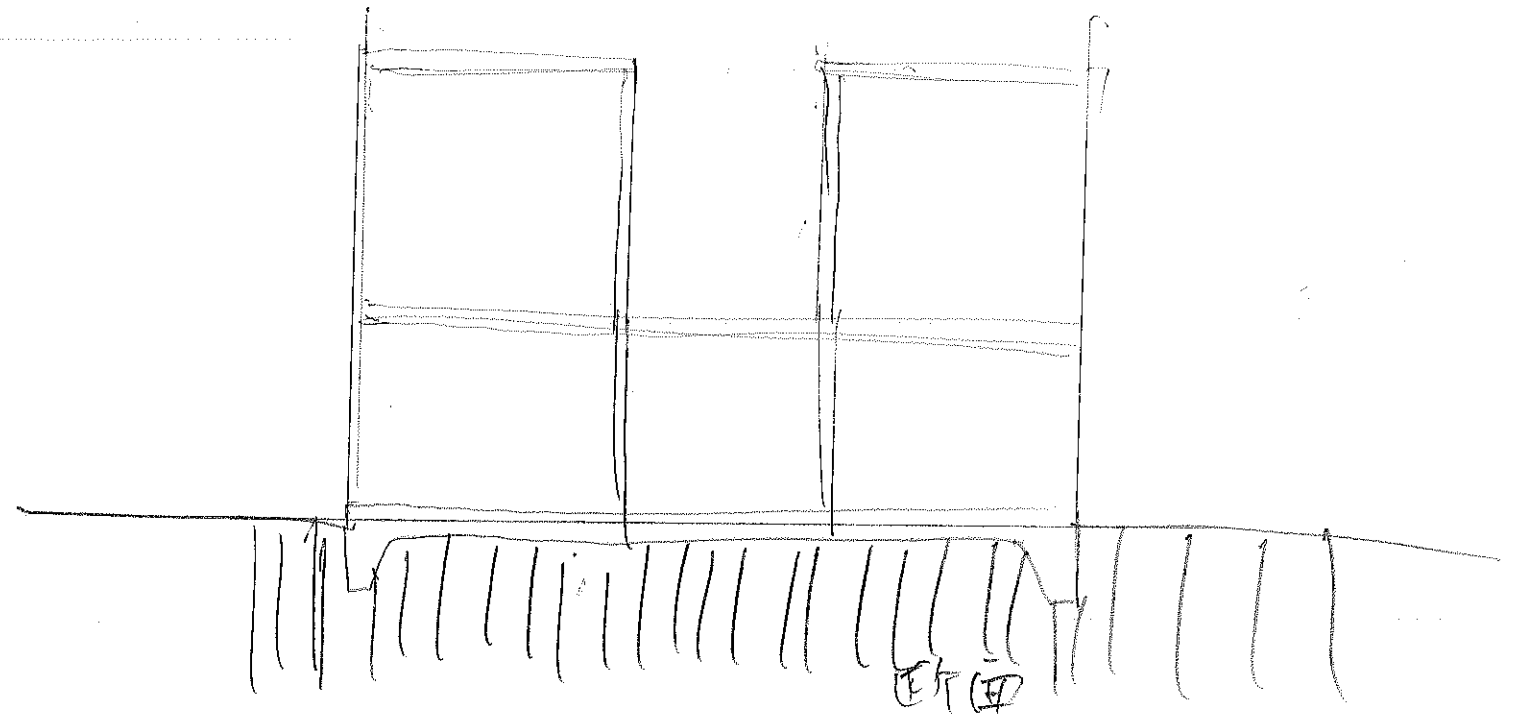
1F



1F平面



2F平面



断面

橋本

- 1 とうげい家
- 2 読書家
- 3 宿泊者

